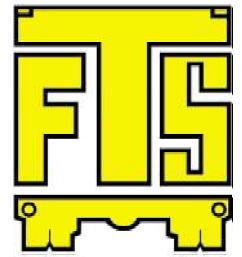





# F.T.S. FARINA TRADING SASSUOLO

Via Sant' Andrea, 10 - 41049 Sassuolo (MO) Tel.+39-0536-811221

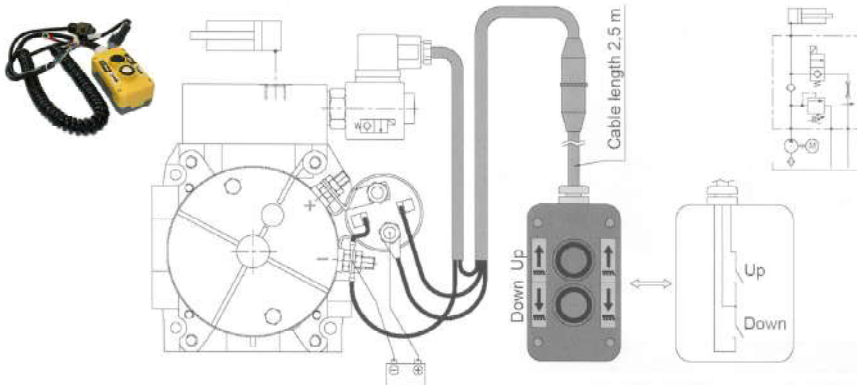
• V.A.T. IT02173790367 •

Web site: [www.fts-farina.it](http://www.fts-farina.it) E-Mail: [info@fts-farina.it](mailto:info@fts-farina.it)

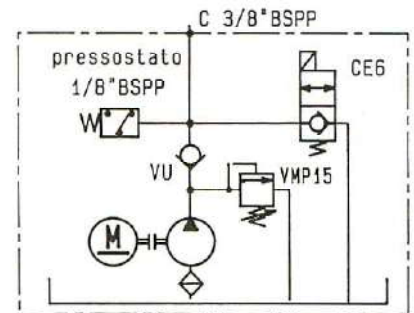


		
<p>Fine corsa in tiro <i>Stop cylinder stroke pull-type</i></p>	<p>Pulsantiera elettrica con spia <i>Electric panel control</i></p>	<p>Tubo idraulico 3/8" L=1000 Attacco curvo90 -1/2" dritto 3/8"  <i>Hydraulic pipe 3/8" L=1000 Pipe connenction90 - 1/2" - straight 3/8"</i></p>
<p><b>Art. 14600002</b></p>	<p><b>Art. 14600001</b></p>	<p><b>Art. 14121000</b></p>

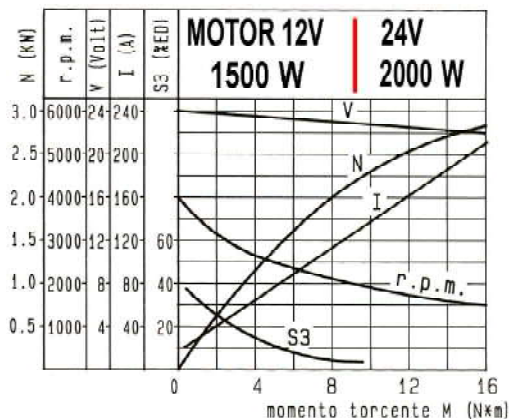
Controllo a distanza  
*Remote controle*  
**Art. 14600006**



**Schema idraulico**  
*Hydraulic circuit*



## CURVA CARATTERISTICA MOTORI *MOTORS DIAGRAMS*



## COLLETTORE CENTRALE *MANIFLOND CENTRAL*

