

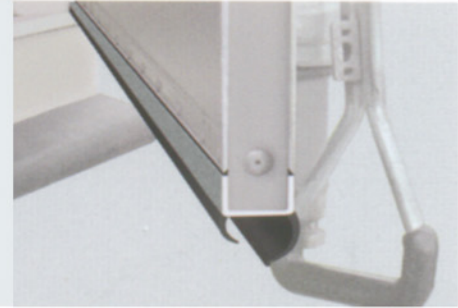
Profili per semirimorchio e camion frigo

Profiles for semi-trailer and refrigerated

New Article

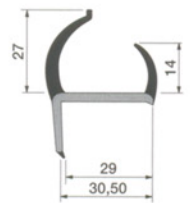
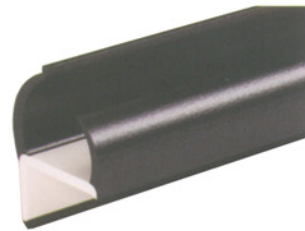
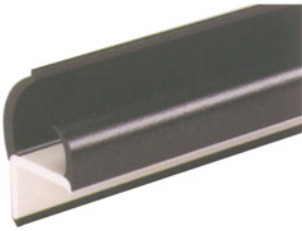
Profili per porte realizzati in PVC gomma. Hanno la particolarità di mantenere la propria elasticità anche alle basse temperature. Indicati per veicoli frigo. I profili sono coestrusi quindi la parte rigida permette un notevole risparmio di tempo sia nel taglio che nel montaggio. I profili angolari sono realizzati in PVC antiurto.

Rubber PVC door profiles: their main feature is the elasticity even at low temperatures. They are particularly suitable for the refrigerated body. These profile are coextruded: so, the rigid part allows a considerable time-saving both during the cutting and the fitting. The corner profile are manufactured in stock-resistant PVC.

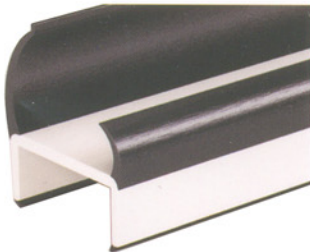


Art. 54082270 L=2700
Art. 54082320 L=3200
Art. 54082500 L=5000

Art. 54080270 L=2700
Art. 54080320 L=3200
Art. 54080500 L=5000



Art. 54086270 L=2700
Art. 54086320 L=3200
Art. 54086500 L=5000



Profili per porte realizzati in PVC gomma. Hanno la particolarità di mantenere la propria elasticità anche alle basse temperature. Indicati per veicoli frigo. I profili sono coestrusi quindi la parte rigida permette un notevole risparmio di tempo sia nel taglio che nel montaggio. I profili angolari sono realizzati in PVC antiurto.

Rubber PVC door profiles: their main feature is the elasticity even at low temperatures. They are particularly suitable for the refrigerated body. These profile are coextruded: so, the rigid part allows a considerable time-saving both during the cutting and the fitting. The corner profile are manufactured in stock-resistant PVC.



Art. 54087270 L=2700
Art. 54087320 L=3200
Art. 54087500 L=5000

